


- 
- A detailed view of the CMA 70 Microdialysis Bolt Catheter. The device consists of a long, thin, flexible shaft with a reinforced section. At the end of the shaft is a gold-colored tip. The catheter is connected to a clear plastic holder with a compression screw. The background is a light blue gradient with a white curved line separating the top and bottom sections.
- For bolt implantation
  - "Gold-Tip" visible on CT
  - For early detection of brain ischemia
  - Reinforced shaft

# CMA 70

## Microdialysis Bolt Catheter

This sterile, single use catheter is minimally invasive and designed for implantation in brain tissue through the IM2 Bolt Kit for 2 Brain Probes or the IM3 Bolt Kit for 3 Brain Probes from Integra. The catheter has a 130 mm long shaft and a membrane length of 10 mm. The shaft has a reinforced stainless steel section measuring 16.5 mm in length. This reinforcement is located where the compression screw of the bolt is to be tightened.

The dialysing membrane of the catheter has been especially developed to achieve optimal diffusing characteristics. This allows a high recovery of substances from the extra cellular fluid into the catheter.

### The "Gold tip" makes the catheter visible on CT

The tip of the catheter contains a gold thread. The "Gold tip" is visible on CT-scanning and makes it possible to locate the exact position of the catheter.

### Clinical solution for early detection of ischemia

The CMA 70 Microdialysis Bolt Catheter is connected to a CMA Microdialysis Pump. The outlet tube extends to a holder for a microvial that collects the dialysis sample.

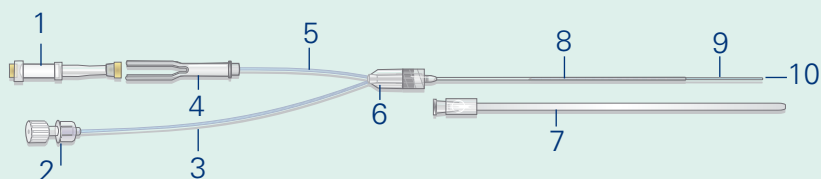
The microvials are usually changed every hour and the samples are transferred to and then analyzed in a CMA Microdialysis Analyzer. This provides an ideal clinical solution for early detection of ischemia in the brain.



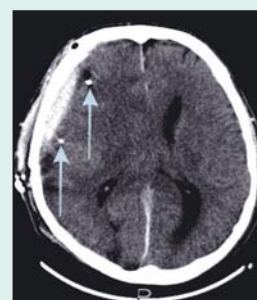
**CMA** / *Microdialysis*

[www.microdialysis.com](http://www.microdialysis.com)

## Parts of the CMA 70 Microdialysis Bolt Catheter



1. Microvial (polystyrene + santoprene)
2. Luer lock connection to syringe (polycarbonate)
3. Inlet tube (polyurethane)
4. Vial holder (polycarbonate)
5. Outlet tube (polyurethane)
6. Liquid cross with luerlock connection (ABS)
7. Protection tube (polyethylene)
8. Shaft (polyurethane) with a 16.5 mm stainless steel re-inforcement
9. Dialysis membrane (polyamide)
10. Gold thread within the catheter tip



The distal part of the catheter has a gold thread (3x0.13 mm) within the catheter tip, which makes the catheter location in the tissue visible on CT

## technical information

	material	length mm	Ø mm
<b>shaft</b>	polyurethane	130	OD 0.9
<b>membrane</b>	polyamide	10	OD 0.6
<b>inlet tube</b>	polyurethane	600	OD 1.0
<b>outlet tube</b>	polyurethane	220	OD 1.0

## ordering information

**CMA 70 Microdialysis Bolt Catheter 4/pkg** **Ref. No. P000131**

### Accessories

Microvials 250/pkg P000001  
 Microvial Rack 12/pkg P000028  
 Microvials in rack, Sterile 12x4 P000154

**CE** CE marked according to the Medical Device Directive, 93/42/EEC

**STERILE** Sterilised by  $\beta$ -radiation

↓ Storage temperature: 4-25 °C

② Single use only



**CMA** / *Microdialysis*

www.microdialysis.com

Box 2, SE-171 18 Solna, Sweden  
 Tel: +46 8 470 10 00 Fax: +46 8 470 10 50  
 E-mail: CMA@microdialysis.se